




ANNUAL REPORT 2010-2011

Touch One Heart, Change One Life

TABLE OF CONTENTS

Letter from Our President	1
Governing Board	2
Introduction	3
• Vision	3
• Mission	3
• Objectives	
Projects	4
• Ongoing Projects	4
• Events	8
Maitri Team	10
• Meet Our Staff	10
• Interns & Volunteers	11
Official Documentation	12
• Audited Financial Reports	12
• Registration	18
Get Involved	19



LETTER FROM OUR PRESIDENT

Dear Friends of Maitri,

At the outset I would like to acknowledge that your support motivates and encourages Maitri team to initiate new projects. Maitri was able to achieve far more than it had set out to achieve in the year 2010-2011.

Maitri takes great pride in the leadership it has demonstrated in addressing challenging social and health problems including HIV/ AIDS awareness and dealing with stigma and discrimination in the uniformed services. Maitri has conducted sensitization workshops for reducing violence in the home setting for more than 20,000 officers, jawans and their families till date, to make every effort to stimulate a new level of commitment to ending domestic violence in our military communities. We feel satisfied through our initiatives, men and women in the uniformed services, have started talking about issues in their homes and are more likely to resolve their problems than ruining their health and family health.

One of the challenges Maitri has accepted is in promoting respect and dignity for the widows of Vrindavan namely Project Jeevan. Under the Nutrition Program in which a nutritious mid-day meal is provided to 500 widow mothers in two ashrams in Vrindavan. We would also like to share with you that 36 widow mothers have successfully been operated for cataract and 22 widows were provided with numbered glasses. There were 4 medical camps organized, doctors from all fields of medicine participated, and medicines were dispensed. It is our pleasure to inform that an average weight gain of 750gms to about 1.5 kg has been reported since the program was initiated. Widows were also given 2 sets of sarees, blouses, petticoats and a pair of chappals. In winters they were provided with blankets.

I would like to report that in year 2010-2011, Maitri reached about 7,500 rickshaw pullers under its Project Awaaz, which looks at the HIV and health and welfare concerns of migrant and mobile populations. Maitri facilitated the ART treatment of about 28 migrant rickshaw pullers who were found infected with HIV during our HIV screening drive every week.

Under Maitri umbrella, Maitrigram is expanding its vision. The Empowerment project for women from the slums is getting more productive, some women after training have become entrepreneurs while some have found jobs and others are doing a great job of ensuring well stitched clothes for their family and enhancing the family income by saving money on tailoring outside.

We are happy to inform you that the supportive education program in Maitrigram is now reaching about 70 children. 14 deserving children from the slums are getting a scholarship of Rs.6000 each while ensuring they complete their education.



With Best Regards,

Winnie Singh
Maitri Executive Director

OUR GOVERNING BOARD



Lt. Gen. (Retd.) Bhopinder Singh
Maitri Founder, President



Winnie Singh
Maitri Founder, Executive Director



Ashok Jolly
Maitri Director



Sonal Singh Wadhwa
Maitri CEO

R.K. Chopra, Member

Col. S.K. Mehta, Member

Sanjay Sharma, Member

Mushahid Hussain, Member



VISION & MISSION

Maitri is committed to poverty alleviation, gender issues, health and education.

Maitri works to promote access to basic health, education, rights and equal opportunities to vulnerable populations including women and children.

We work on making lasting changes in the lives of our targeted populations that include women at risk, uniform service and their families, migratory populations and their families and destitute widows.

OBJECTIVES

1. Combat the stigma and injustice associated with women living in widowhood.

According to the 1991 government census, India had the largest number of widows in the world, numbering 33 million. In India, widows are often viewed as a curse, and thus, are belittled and mistreated. Many of these widows seek refuge in ashrams in the North Indian cities of Mathura, Vrindavan and Varanasi. Maitri assists widows in Vrindavan by providing meals, dietary supplements, health clinics, and other types of help and guidance necessary to improve the circumstances for this group, which has been silenced and forgotten by society.

2. Work to address the problem of domestic violence through the education and empowerment of women and families at risk.

According to statistics released by the World Bank, violence against women is the leading cause of death and disability for women in the 15-44 age group – more than cancer, vehicle accidents, malaria, or war. In India, 1 in 3 women face domestic violence, which can take the form of physical, sexual, and/or emotional abuse from a spouse or family member. Maitri works with vulnerable populations; particularly the wives and families of uniformed personnel, to empower women, to recognize and effectively respond to domestic violence, and to sensitize their husbands to the physical and emotional rights and needs of themselves and their families.

3. Improve, through sustainable methods, the health of its target populations through HIV/AIDS and TB education, and health care support.

Many health challenges faced by India's underprivileged arise from a lack of understanding of infectious diseases such as malaria, STIs, HIV/AIDS and TB. This is further compounded by the lack of healthcare in many at-risk populations. Maitri works with vulnerable populations, such as migrant workers, uniformed personnel and their families, to spread knowledge about the risk factors associated with these diseases; to provide testing, counseling, and support; and to fight the stigmas that perpetuate ignorance and have serious negative impact on those who are infected.

4. Provide the tools, training, and empowerment necessary for the underprivileged to break the cycle of poverty.

Poverty is a self-perpetuating, debilitating phenomenon, which gives rise to illiteracy, disease, and malnutrition. Additionally, poverty disproportionately harms the already vulnerable populations of women and children. Maitri supports its partner NGO – Maitriagram – to provide vocational and supplementary training to disadvantaged populations, and to improve the conditions of migrant workers allowing them to live healthy, economically self-sufficient, and dignified lives.



ONGOING PROJECTS

PROJECT AWAAZ (VOICE)

Many of the health challenges faced by India's underprivileged arise from a lack of understanding of infectious diseases in addition to marginalization. This is often compounded by the lack of access to and quality health care.

Project Awaaz is a public health initiative that works with migrant workers, uniformed personnel and their families, to raise awareness about the risk factors associated with infectious diseases such as malaria, STIs, HIV/AIDS and TB; to provide testing, counseling, and support. Through the provision of workshops, seminars, and street plays, *Project Awaaz* aims to promote health-seeking behavior and to fight the stigmas that perpetuate ignorance and ill treatment of those who are infected.

2010-2011 Accomplishments

Maitri is awarded a TI Project by Delhi State AIDS Control Society (DSACS)

Assisted by a TI Project, funded by the Delhi State AIDS Control Society (DSACS), *Project Awaaz* now offers counseling, advocacy, and medical services at a variety of Drops-in Centers located throughout the Pharganj community. The TI Project has enabled *Maitri* to amplify its services in addition to creating capacity for reaching a larger number of individuals in a systematic manner.

Project Awaaz Health Camps

- 9 December, 2010; Karol Bagh, New Delhi
- 30 March, 2010; Karol Bagh, New Delhi
- 24 April, 2010; Karol Bagh, New Delhi

Awaaz Reached 3,000 Beneficiaries

From April 2010 to December 2010:

served 700 persons
administered 320 test
provided 8 medical referrals to ART centers
linked 16 to DOT Centers
offered 600 clinical consultations

From January 2011 to April 2011:

served 2,108 persons
administered 228 test
provided 2 medical referrals to ART centers
treated 13 STI cases
offered 213 clinical consultations



PROJECT JEEVAN (LIFE)



According to the 1991 government census, India had the largest number of widows in the world, numbering 33 million. In India, widows are often viewed as a curse, and thus, are belittled and mistreated. Many of these widows seek refuge in ashrams in the North Indian cities of Mathura, Vrindavan and Varanasi, where their livelihood is largely dependent on begging and singing at temples for meager earnings.

Project Jeevan is a comprehensive health and advocacy initiative focused on improving the health and economic status of the estimated 5,000 widows living in Vrindavan. With the assistance of the Uttar Pradesh government, Maitri provides some 500 widows with a daily nutritious mid-day meal which includes rice, chappatis, dal, and vegetables in addition to providing iron, calcium, and zinc supplements.

Project Jeevan also includes the provision of health education, legal advocacy, counseling, and skills training workshops. Routine health check-ups are being provided and minor surgeries, including cataract surgery are performed on a regular basis.

2010-2011 Accomplishments

Launch of Project Jeevan at Meera Sahbhagini/Pagal Baba Ashram

On 4 July, 2010 Project Jeevan was launched at the Pagal Baba Ashram in Vrindavan. Thus far, 200 widows have received medical examinations and 300 widows are fed daily. In partnership with Shroff Eye (New Delhi), Maitri has secured 4 cataract operations, 5 eye exams, and 4 sets of corrective lenses for the widows.

Expansion of Project Jeevan to Chitanya Vihar Ashram

On 5 January, 2011, Maitri proudly expanded Project Jeevan to the Chitanya Vihar Ashram in Vrindavan. The ashram currently supports and serves 200 widows and more are to become residents in the coming months.

Health Camps, Project Jeevan

- September 2010; Vrindavan, Meera Lahbhagini Ashram
- October 2010; Cataract referrals and operations

Health Services

- September 2010; Vrindavan, Meera Lahbhagini Ashram
- October 2010; Cataract referrals and operations



PROJECT SAMVEDANA (COMPASSION)

The World Bank reports that violence against women is the leading cause of death and disability for women in the 15-44 age group – more than cancer, vehicle accidents, malaria, or war. In India, 1 in 3 women face domestic violence, which can take the form of physical, sexual, and/or emotional abuse from a spouse or family member.



Project Samvedana is a multi-pronged approach aimed at addressing the domestic abuse and sexual violence directed towards women, particularly in the families of military, paramilitary, and police personnel. The project conducts workshops for women to provide the knowledge necessary to recognize and respond to domestic violence in addition to sensitizing men to the physical and emotional needs of their spouses.

Project Samvedana emphasizes the importance of education and financial independence, as well as encouraging healthy lifestyles and behavior through awareness workshops on STIs, HIV/AIDS, TB, and general health. Most recently, the project has incorporated legal and emotional counseling as a part of the the services extended to victims, free of charge.

2010-2011 Accomplishments

Samvedana Workshops

- September 2010; Shillong
- November 2010; CVD Delhi Cantt and COD Naraina, New Delhi
- December 2010; Terrier Hostel, Delhi Cantt
- 22 March, 2011; National Security Guard, Manesar
- 19 April, 2011; Navy Wives Welfare Association, Cheneky Rpuri



Families Make A Difference

Since the inception of Project Samvedana, we have reached approximately 20,000 individuals. Through the various workshops this year, we reached:

- 2,000 Soldiers
- 2,000 Ladies
- 500 Officers

Each year the number of individuals sensitized to violence grows and with it, the number of families living in healthy and loving environments.

We are proud to collaborate with institutions that allow us to expand our reach in a systematic manner.



MATRIGRAM

Poverty is a self-perpetuating, debilitating phenomenon, which gives rise to illiteracy, disease, and malnutrition. Additionally, poverty disproportionately harms the already vulnerable populations of women and children.

Maitrigram is a poverty alleviation program designed to provide vocational and supplementary training to disadvantaged populations. Maitrigram consists of two initiatives: an empowerment program for women which provides training in clothing design, tailoring, and sewing, as well as job placement services; and a supplemental education program for school-aged children that provides additional academic support.



2010-2011 Achievements



Maitri Awards Scholarships to Meritorious Students

This year, Maitri awarded 14 scholarships in the amount of Rs.6000 each in an effort to further support the educational needs of disadvantaged children. Maitri maintains a strong commitment to the promotion of educational opportunities aims to increase the number of awarded in the coming years.

Altogether, Maitrigram provided training and support to **25 young women and 70 disadvantaged children.**

PROJECT JAGRITI (AWAKENING)



Project Jagriti works with high school and college students to raise awareness about adolescent issues, safe sex practices, the risk factors associated with HIV/AIDS/STI infection, as well as substance abuse. Using interactive presentations, questionnaires, and audio-visual media, Maitri addresses many knowledge gaps and misconceptions surrounding sexuality and addiction.

HIV/AIDS Awareness and Substance Abuse Education

During the month of July, through Project Jagriti, staff and interns from Maitri visited three Delhi high schools to inform and educate students on sexuality, HIV/AIDS and substance abuse. Maitri reached 120 students at the Saint Mary School, 100 at the Modern School and 70 students at the Guru Harkrishan Public School.

- July 21, 2010- Mary's School
- July 23, 2010- Modern School, Vasant Vihar
- July 26, 2010- Guru Harkrishan Public School



EVENTS

National Consultation on Domestic Violence and Its Public Health Implications: “Home is where the Hurt Is” February 10, 2011

With the support of the National Commission for Women and UNFPA, Maitri held its National Consultation on Domestic Violence and Its Public Health Implications. Entitled “Home is Where the Hurt is”, the conference was attended by Dr. Girija Vyas, the chairperson of the National Commission for Women, and guest of honor Mr. Devendra Kumar Sikri, Secretary of the Ministry of Women and Child Development. Speakers and delegates from the government, multi-lateral agencies, various NGOs and representatives from several intellectual institutions were also in attendance. Finally, the uniformed services were well represented by army, navy and air force officers and their wives. The conference explored various issues relating to domestic violence: public health Implications, HIV infection, health sector response, civil society and general responses, the law, uniformed services. Dr. Joe Thomas, Director of the Technical Support Facility South Asia, expressed that domestic violence has no bias. It is a problem for civil society and the uniform services. The only difference seems to be that women in the uniform services do not feel they have many avenues for finding a solution without compromising the interests of both the husband and the wife.

Recommendations from Dr. Thomas included

- Create a broad social movement against violence against women.
- Work with men and boys; prevent them from becoming perpetrators.
- Strengthen the support services for domestic violence victims.
- Make domestic violence a political agenda.



National Seminar: “Reaching Out to the Widows of Vrindavan” March 8, 2011

On the occasion of International Women’s Day, Maitri organized a national seminar entitled “Reaching Out to the Widows of Vrindavan”. The seminar’s primary speakers included Mr. Sushil Pandit, founder of Hive Communications, who has been a guide to Maitri’s Project Jeevan; Ms. Rashmi Singh, Director of Mission Convergence; Ms. Neera Mishra, founder and trustee of Draupadi Trust, which facilitates the empowerment of young women; and Ms. Winnie Singh, Executive Director of Maitri. Social and international organizations like UN Women, CHP, Care India, Help Age India, Marg, Human Rights Law Network, and NISD participated in the seminar. The seminar was also supported by the National Commission for Women. In the closing, Lt. Gen Singh said that Maitri is looking to restore the dignity of the widows. He asked the participants to imagine the potential if all the widows in Vrindavan had ID cards. How much power would they flex if they were to vote in unison? If they did, Lt. Gen Singh reasoned, that they would not suffer as much as they do now. He expressed his certainty that with the support of those present Maitri will be able to scale up project Jeevan larger than the 500 widows it is already helping.



MORE EVENTS...

Mela (Festival), Fundraising Events

- October 2010; Diwali mela, Blind School
- October 2010; Halloween mela, British High Commission
- November 2010; Diwali mela, Modern School, New Delhi
- November 2010; DCWA's International Bazaar, Ashoka Hotel, New Delhi
- December 2010; Winter Carnival of Springdales School, Dhaula Kuan, New Delhi
- December 2010; OZ Haat, Australian High Commission, New Delhi



6th Annual Golf Tournament Fundraiser

The annual Omaxe-Maitri Invitational Golf Tournament was held in November at the Qutub Golf Course in New Delhi. The golf tournament is a year event run by Maitri and Omaxe to bring awareness to the corporate community about the various projects run by Maitri. The 2010 tournament was held in support of Project Jeevan. Approximately 200 people attended and over 70 golfers participated in the tournament to raise funds for the widow mothers of Vrindavan. Many also contributed to fund raising efforts by buying Aromaitri aroma oils and homemade pickles made by women involved in Project Maitriagram. Funds raised by this event benefited the 230 widow mothers of the Pagal Baba ashram.



OUR STAFF MEMBERS



Priyanka Konsam
Project & Research Officer



Anita Gupta
Project Coordinator
(Project Jeevan)



Piyali De
Project Coordinator



Bhim Budha
Project Coordinator
(Aashirwad)



Deepak Budha
Field Officer



Raj Rani
Field Officer



Resham Pathak
Field Officer



Ajit Mathur
Accountant and Administrator



Santosh Chaturvedi
Field Officer



Ajay Kumar
Driver



Jagir Singh
Office Assistant



Ms. Prabha
Teacher - Maitrigram



MEET OUR INTERNS

Every semester, Maitri hosts 2-3 students from the University of Utah and Brown University to serve internships where they learn firsthand about the various health and social issues impacting the people of India. A special thanks to our 2010-2011 interns for their contributions!

Summer 2010



Chelsea Harris

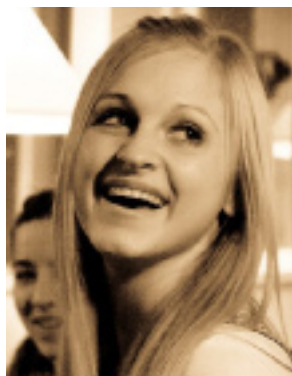


Jeevan Moses



Sunil Bhambri

Fall 2010



Mary Boekweg



Ben Dailey

Spring 2011



Scott Allred



Brooke Littlewood



OFFICIAL DOCUMENTATION

HDSG & Associates

CHARTERED ACCOUNTANTS

D-36, Jangpura Ext., New Delhi - 110014.

Tel. : + 91-11-24321152

+ 91-11-24321153

+ 91-11-51823415

Fax : + 91-11-24321154

E-mail : hdsng@hdsngindia.com

AUDITOR'S REPORT

FORM NO. 10B

Audit Report under section 12A(b) of the Income Tax Act, 1961 in the case of charitable or religious trusts or institutions.

We have examined the Balance Sheet of MAITRI: SHILLONG, Meghalaya, as at 31st March, 2011 and the Income & Expenditure accounts for the year ended on that date which is in agreement with the books of account maintained by the said institution.

We have obtained all the information and explanations which to the best of our Knowledge and belief were necessary for the purpose of the audit. In our opinion, proper books of account have been kept by the above named institution so far as it appears from our examination of the books.

In our opinion and to the best of our information, and according to information given to us the said accounts give a true and fair view:-

- (i) In the case of the Balance Sheet of the state of affairs of the above named institution as at 31st March, 2011 and
- (ii) In the case of the Income and Expenditure Account of the Excess of expenditure over income, of its accounting year ending on 31st March, 2011.

The prescribed particulars are annexed hereto.

For HDSG & Associates
Chartered Accountants


Atul Jolly

(Partner)

M.No. 91168



Place: New Delhi

Date: 17 May 2011

MAITRI
BALANCE SHEET
As on 31st March 2011

	AMOUNT	AMOUNT
Liabilities		Assets
Capital Account	5,632,889.35	Fixed Assets
Reserves & Surplus	5,632,889.35	Fixed Assets-Building
Loans (Liability)		1,000,000.00
Current Liabilities	143,522.00	Fixed Assets-Computers
Audit Fee Payable		343,353.00
Expenses Payable	31,524.00	Fixed Assets-Electronic Items
Income Tax Deducted at Source	14,898.00	89,258.00
Salary & Wages Payable	97,100.00	Fixed Assets-Fire Extinguisher
Sundry Creditors for Expenses		13,800.00
		Fixed Assets - Furniture
		16,200.00
		Fixed Assets-Telephone Sets
		32,122.00
		Fixed Assets-Vehicles
		44,000.00
		Current Assets
		4,679,816.93
Depreciaton Fund	663,030.06	Loans & Advances (Asset)
Accumulated Depreciation	494,964.26	301,161.00
Depreciation for the year	168,065.80	Sundry Debtors
		3,900.00
		Cash-in-hand
		11,824.89
		Accrued Income
		101,651.33
		Accrued Interest
		251,384.39
		Bank Account-Canara Bank
		1,750,708.24
		Bank Account-J & K Bank
		13,640.38
		Bank Account-State Bank of India-F C R A
		27,063.70
		Bank Account-State Bank of India-S B
		12,500.00
		Cash in Hand
		2,200,000.00
		Deffered Revenu Expenditure
		5,983.00
		Fixed Deposit-Development Corporate Bank
		47,798.00
		Fixed Deposits-Canara Bank
		47,798.00
		Petty Cash-Shillong
		173,093.48
		Branch / Divisions
		173,093.48
		Maitri Gram
		173,093.48
		Profit & Loss A/c
		173,093.48
		Opening Balance
		173,093.48
		Current Period
		173,093.48
Total	6,439,441.41	Total
		6,439,441.41


ASHOK JOLLY
 (DIRECTOR)



DATE: 17th May 2011
Place: New Delhi

MAITRI

J-92, ARD Complex,
R.K.Puram, Sector-13,
New Delhi - 110 066.

Income & Expenditure Statement

1-Apr-2010 to 31-Mar-2011

Particulars	1-Apr-2010 to 31-Mar-2011	Particulars	1-Apr-2010 to 31-Mar-2011
Indirect Expenses	55,37,489.90	Indirect Incomes	53,64,396.42
Audit Fee	10,000.00	Donations Received	39,078.42
Bank Charges	2,528.00	Golf Tournament - Receipts	11,50,000.00
Books and Periodicals	1,352.00	Interest Earned on S B A/c	21,981.00
Cleaning Material	12,092.00	Miscellaneous Income	4,500.00
Computer Maintenance Expenses	66,910.00	Project Awaz - Receipts	6,26,700.00
Conveyance Expenses	42,710.00	Project Jeevan - Receipts	27,15,134.00
Depreciation	1,68,065.80	Project Samvedana - Receipts	8,06,203.00
Donations Given	3,500.00	Tuition Fee Received - A R D	800.00
Educational Material	915.00		
Electricity and Water Charges	37,234.00	Excess of Expenditure over Income	1,73,093.48
Food and Beverages	19,770.00		
Golf Tournament - Expenses	6,25,218.75		
Health Camp Expenses	8,305.00		
Honorarium	60,000.00		
Insurance Charges	1,798.00		
Internet Charges	40,997.00		
Membership Fee & Subscriptions	1,105.00		
Miscellaneous Expenses	20,528.00		
Mobile Phone Charges	39,080.00		
Office Rent - Shillong	39,000.00		
Petrol & Gas	28,041.00		
Postage and Courier	7,569.00		
Printing and Stationery	26,186.00		
Project Awaz - Expenses	3,31,807.00		
Project Jeevan - Expenses	17,78,895.35		
Project Samvedana - Expenses	2,76,195.00		
Rent - Office	80,000.00		
Repairs & Maintenance	60,687.00		
Salary and Wages	13,24,211.00		
Seminar-I Expenses	1,20,054.00		
Seminar-II Expenses	1,20,360.00		
Staff Welfare Expenses	2,987.00		
Tea and Snacks	29,152.00		
Telephone Charges	50,588.00		
Tender Fee	500.00		
Travelling Expenses	1,445.00		
Web Site Expenses	95,000.00		
Xerox Photos and Fax	2,704.00		
Total	55,37,489.90	Total	55,37,489.90

ASHOK KOLLY
(DIRECTOR)



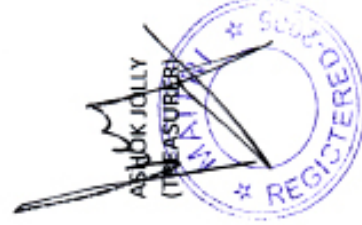
DATE: 17-5-2011
Place: New Delhi

MAITRI
FIXED ASSET SCHEDULE

SCHEDULE 2

PARTICULAR	FIXED ASSET (AT COST)			DEPRECIATION FUND			W.D.V. AS AT				
	RATE	OPENING	ADDITION	ADJ	CLOSING	OPENING	ADDITION	ADJ.	CLOSING	31.3.2011	31.3.2010
FIRE EXTINGUISHER	15%	13800.00	0.00	0.00	13800.00	2949.75	1627.54	0.00	4577.29	9222.71	10850.25
ELECTRONIC ITEMS	15%	21978.00	67280.00	0.00	89258.00	3313.07	12891.74	0.00	16204.81	73053.19	18664.93
COMPUTER	60%	278048.00	65305.00	0.00	343353.00	207403.24	69421.32	0.00	276824.56	66528.44	50397.20
TELEPHONE SET	10%	2700.00	29422.00	0.00	32122.00	3698.20	3185.20	0.00	6883.40	25238.60	2430.00
BUILDING	10%	1000000.00	0.00	0.00	1000000.00	271000.00	72900.00	0.00	343900.00	656100.00	729000.00
VEHICLE	15%	44000.00	0.00	0.00	44000.00	6600.00	5610.00	0.00	12210.00	31790.00	37400.00
FURNITURE	15%	0.00	16200.00	0.00	16200.00	0.00	2430.00	0.00	2430.00	13770.00	0.00
		1360526.00	178207.00	0.00	1538733.00	494964.26	168065.80	0.00	663030.06	875702.94	848742.38

0.00


 ASHOK JOLLY
 (TREASURER)


 H.D.S.G. & Associates Chartered Accountants

DATE:
PLACE: NEW DELHI

MAITRI

Projections for 2011 -2012 INFLOWS (in rupees)

1.	Golf Tournament	-	15,00,000.00
2.	Interest	-	60,000.00
3.	<u>State/Central Govt. Projects</u>		
a.	Central- Research on widows of Vrindavan Varanasi and Haridwar		22,00,000.00
b.	Delhi - Mainstreaming uniformed persons and their families		25,00,000.00
c.	U.P.- Upkeep & maintenance of widow ashrams at Vrindavan		12,50,000.00
d.	Delhi- Targeted Intervention Projects (DSACS)		12,50,000.00
4.	Australian High Commission (mid day meal at Maitrigram)		3,50,000.00
5.	<u>Oak Foundation</u>		
-	Widows(Jeevan) \$100K		67,50,000.00
-	Rickshaw Pullers \$25K		
-	Domestic violence \$25K		
6.	Fund Raiser in US (\$33K)		15,00,000.00
TOTAL			1,73,60,000.00

MAITRI

PROJECTIONS 2011-12

Outflow	Amt.	Inflow	Amt.
a. Project Jeevan	65,67,560.00	As per schedule	1,73,60,000.00
b. Project Samvedna	19,00,000.00		
c. Project Awaaz	18,00,000.00		
d. New Projects			
i. Research on widows of Vrindavan & Varanasi	22,00,000.00		
ii. Mainstreaming uniformed persons & their families	25,00,000.00		
iii. Upkeep & maintenance of widow ashrams in Vrindavan	12,50,000.00		
e. Maitrigrām (mid-day meal)	3,50,000.00		
f. Technical Support	3,00,000.00		
g. Administration	15,00,000.00		
h. Contingencies	5,00,000.00		
Shortfall	(15,07,560.00)		
TOTAL	1,73,60,000.00	TOTAL	1,73,60,000.00

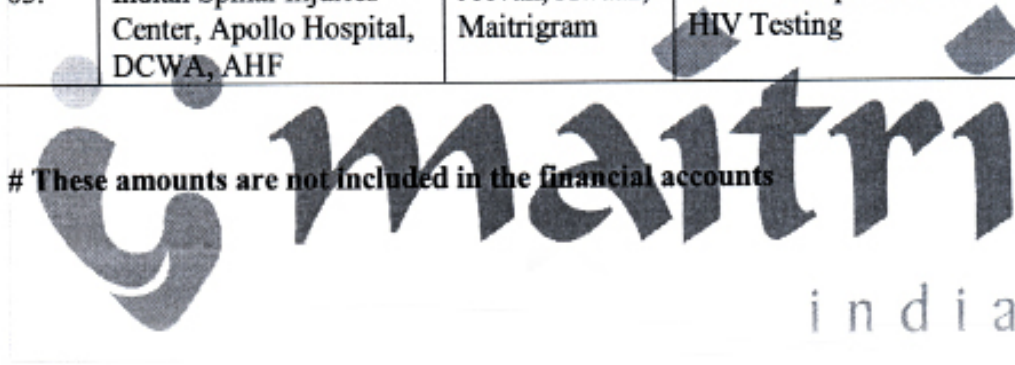
india

MAITRI

Direct (In Kind) Contributors Apr-2010 to 31 Mar-2011

S. No.	Contributor	Project	Amt(Rs)
01.	Sai Foundation	Maitrigram School children	Scholarships for 15 children from slums 90,000.00
02.	Mr. RK Chopra	Jeevan	Chappals, Blankets and shawls for widows 3,00,000.00
03.	Sherof Eye Hospital	Jeevan	Cataract eye operation for 40 widows 4,00,000.00
04.	Gen. Bhopinder Singh	All projects	Office premises, infrastructure, motor cycle & personal vehicles for office use 10,00,000.00
05.	Indian Spinal Injuries Center, Apollo Hospital, DCWA, AHF	Jeevan, Awaaz, Maitrigram	Health Camps with Doctors, Medicines, HIV Testing 10,00,000.00

These amounts are not included in the financial accounts



REGISTRATION

Registration No.	E.46 (Rs) 8/ of 2005/ 148
Date of Registration	30 June 2005
Validity of Registration	Permanent
FCRA (Foreign Contribution Regulation Act 1976) No.	214250091
Registration with any other Government Department (nature of registration)	Income Tax Exemption Certificate u/s 12 and 80 G of Income Tax Act, 1961 F.No. 13/80G/TECH./05-06/4030
Bank Details	Canara Bank, Sector-13, R.K. Puram, New Delhi- 110066 A/C No.- 0347101900770
Pan No.	AAAAM6631J

HOW TO GET INVOLVED

Partner with Us

At Maitri, we recognize that success increases when meaningful partnerships are forged. By combining resources we are able to impact so many lives that would otherwise be out of reach. Read about our projects to see how a partnership with your organization can be a winning combination.

Visit Our Projects

Interested in seeing how Maitri operates to improve the lives of underprivileged populations in India? Come visit us in New Delhi and see our work for yourself. (Please give us at least 3-weeks of notice so that our staff can arrange time to show you around our sites).

Spread Maitri's Message

Maitri's key to success has always been its supporters. Many people, inspired by Maitri's mission, want to make a difference; however, due to location or other limitations, they feel they are unable to help. Yet, many individuals support Maitri by spreading our message. For ideas please see the website.

Become an Intern

Maitri is proud of its international internship program where students work full-time in the office for one semester. Interns perform a variety of research-oriented projects and have the opportunity to work directly with India's most vulnerable populations. In addition Interns are able to experience the culture, cuisine, people and places of India

Volunteer with Us

Maitri has an international volunteer program for students of all ages. Volunteers mostly work with teaching English, life skills, and helping tutor school children from the slums.

Donate

When making a donation we encourage you to:

- View our Wish List
- Sponsor a Project
- Honor a Loved One

For more information contact us at:



J - 92, Anant ram Dairy Complex,
RK Puram Sector 13,
New Delhi.
www.maitriindia.org



MAITRI PARTNERS



UNAIDS



Hinckley Institute
of Politics



Delhi Cantonment
Board



Omaxe Ltd.



Breast Cancer Patients
Benefit Foundation



Delhi State AIDS
Control Society



National Commission
for Women



Delhi Commonwealth
Women's Association



Ministry of
Women and Child
Development



National AIDS
Control Organisation



Akshaya Patra



Air Force Wives
Welfare Association



Oak Foundation

THANK YOU TO OUR DONORS & SUPPORTERS

Omaxe Ltd.
Sara International Ltd.
Trigon Investments & Trading Pvt. Ltd.
V.R. Industries
Enercon (India) Ltd.
Ku Hydro Power Pvt. Ltd.
Suzion Energy Ltd.
Andhra Bank
Union Bank
DNA Infrastructure Pvt. Ltd.
RITES Limited
PHS Consultants Pvt. Ltd.
Karma
Dr. Arvind Pandalai
M.K.Kuchchhal & Co.
Indian Chamber of Commerce & Industries
Universal Yoga Group
UNFPA
UN Office of Drugs and Crimes
Jodhpur National University
Swift Exhibits
Cogent Solutions

St. Mark's Senior Secondary Public School
Steel Authority of India Ltd.
Navin Garg
Swift Corporation
Mr. Rani Khanna
Gensis
Ujala Honda Foundation
G.Rai & Co.
Banwari Lal Charitable Trust
Sara International Ltd.
National Commission for Women
Oak Foundation- Switzerland
National Commission for Women
Sudhir & Cheryl Pahwa
United Nation Fund for Population Activities
Frontier Polymers Pvt. Ltd.
Becton Dickinson India
Omaxe
ORRA Jewelers
Shroff Eye Hospital
INP (Indian Network for People Living with
HIV/AIDS)

